



Wenlock Street, London, N1

BUTLER  STAG



A high specification and spacious modern apartment, situated on the third floor of an architecturally dynamic development located close to Wenlock Basin and Shoreditch Park. Offering bright interiors and top of the range fittings, this property would make the ideal home for a professional couple or sharers.

Two double bedrooms, two bathrooms (one en-suite) private balcony and a fantastic open-plan living and kitchen area. The property also benefits from an allocated underground parking space.



- Two Double Bedrooms
- One Bathroom
- Private Balcony
- Modern Development
- Fob Entry

A high specification and spacious modern apartment, situated on the third floor of an architecturally dynamic development located close to Wenlock Basin and Shoreditch Park.

Offering bright interiors and a modern finish throughout. This property would make the ideal home for a professional couple or sharers. Two double bedrooms, one bathroom and a fantastic open-plan living/kitchen area with a private balcony

The development boasts convenient access to a variety of transport links, recreational attractions and social hubs. Both Old Street and Angel stations are within easy reach while Shoreditch and its electric night life are only moments away. Shoreditch Park and Regent's Canal are also on your door step.



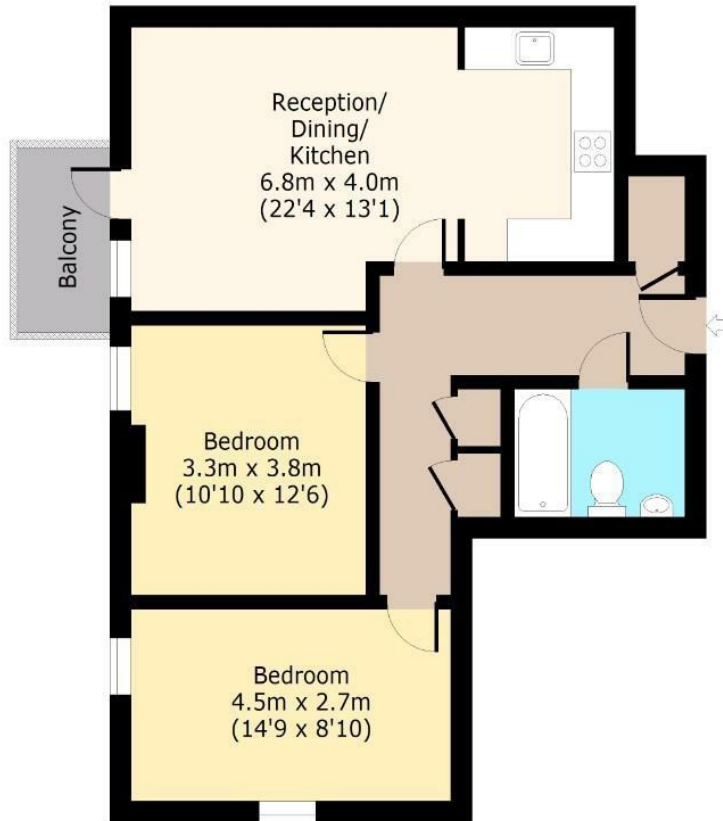


Wenlock Street, N1



Sixth Floor

Approx. 70 Sq. meters (753 Sq. feet)



Total area: approx. 73 Sq. meters (786 Sq. feet) (Including Balcony)

Total area: approx. 70 Sq. meters (753 Sq. feet) (Excluding Balcony)

For illustration purposes only - not to scale

www.lpaplus.com

IMPORTANT NOTICE - These particulars have been prepared in good faith and they are not intended to constitute part of an offer or contract. We have not performed a structural survey on this property and the services, appliances and specific fittings have not been tested. All photographs, measurements, floor plans and distances referred to are given as a guide and should not be relied upon.

BUTLER & STAG

☎ 020 8102 1236

🏠 508 Roman Road, Bow, London, E3 5LU

✉ bow@butlerandstag.com

www.butlerandstag.uk